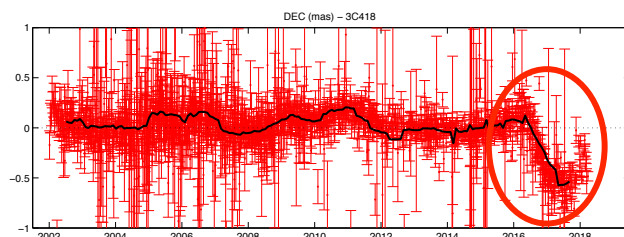
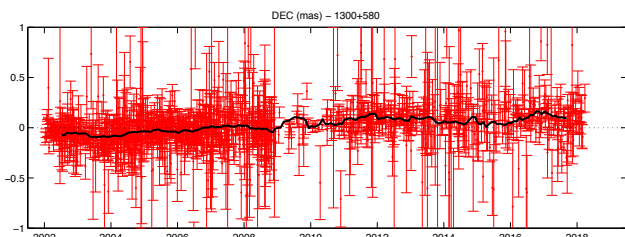
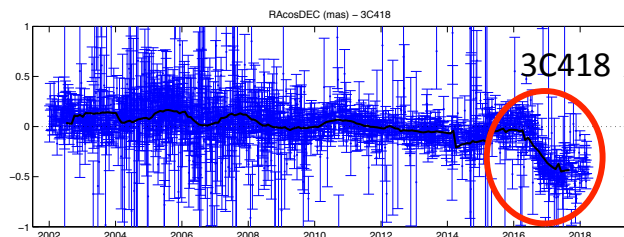
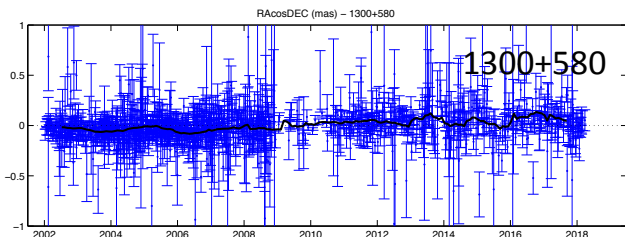
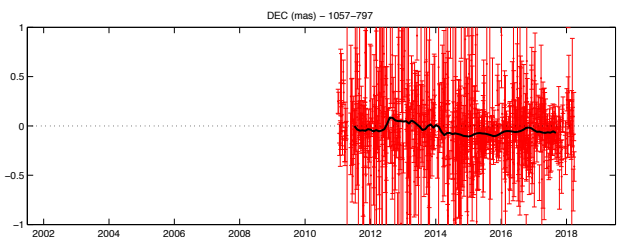
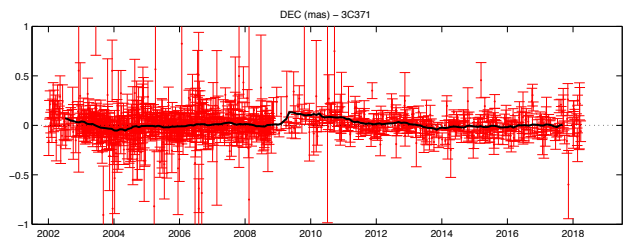
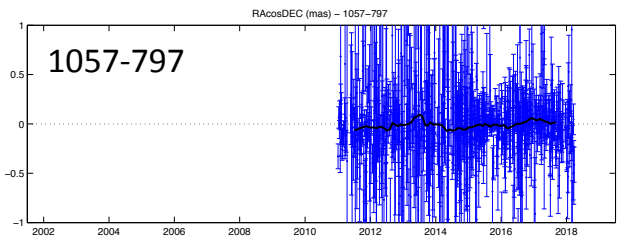
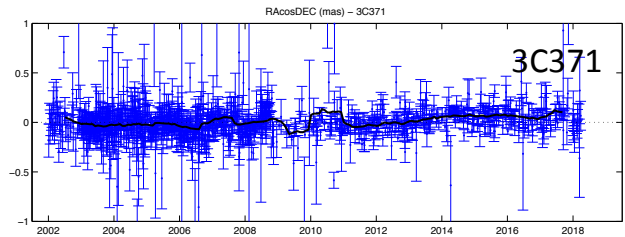


Source selection for scheduling



Source selection for scheduling

Selection of compact and strong sources:

CONT17: compact and strong. Used flux values estimated by sked + SI computed by Patrick Charlot in the fall 2017.

Good geodetic sources: for geodetic sessions.

- Created in 2002 by Nancy Vandenberg: sources with known fluxes.
- In 2002, subset of 107 good sources identified by C. Ma.
- J. Gipson added sources vetted in R&D sessions in 2008-2009, removed SH sources in 2010.
- J. Gipson and K. Le Bail added 35 sources vetted in R&D sessions in 2013. Those sources were chosen using criteria from Jing Sun's approach described in her PhD thesis: the structure index SI is less than or equal to 2.5 (IERS technical note no 35, Table 1, 701 sources) and the X-band flux of the sources is greater than 0.25 Jy (flux.cat, 658 sources).

Special Handling Sources: for analysis – handled differently than other sources.

Source selection for scheduling

- Method for selecting compact sources:
 - Criteria fixed in time: Structure Index (last published list: 2009 TN35, private communication with P. Charlot: 26 “geodetic” sources with $SI \geq 3$), flux values, ...
 - Time series monitoring: statistics, Allan variance, ... => these methods needs a reasonable number of points to be significant.
- Scheduling strategy?
 - Continue selecting compact sources?
 - Take into account the dynamic of the sources?
 - Ideas?

